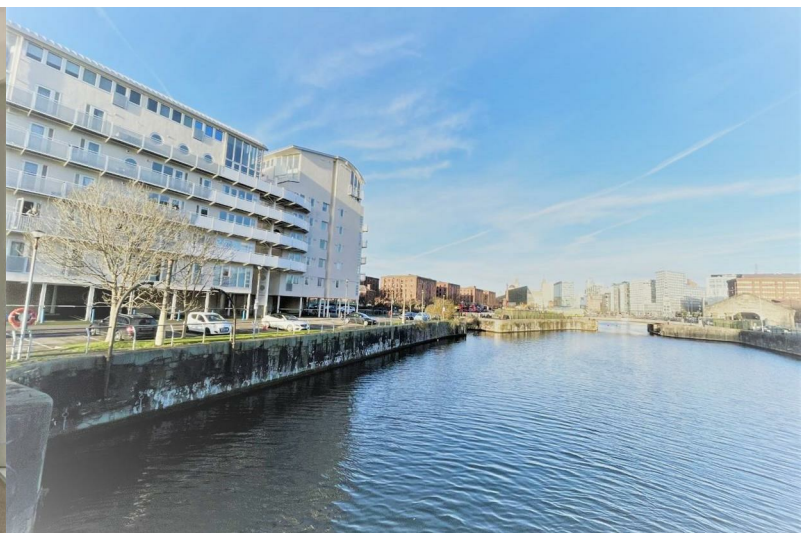




## 6 Royal Quay

, Liverpool, L3 4EX

£850 Per month



# 6 Royal Quay

, Liverpool, L3 4EX

£850 Per month



## Communal Entrance

communal post boxes, lift and stairs to all floors

## Apartment Entrance

Storage cupboard housing services

## Living/Dining Room

10'6" x 14'9" (3.22 x 4.52)

Intercom entryphone handset, gas central heating radiator, double glazed windows and feature porthole window

## Galley Kitchen

5'4" x 9'10" (1.65 x 3.02)

Fitted Kitchen of floor and wall units, drawers and work surfaces, integrated electric oven, hob and extractor, free standing washer/dryer, dishwasher and fridge. Gas central heating combi boiler, double glazed window, part tiled walls, tiled floors,

## Bedroom One

8'5" x 9'10" (2.59 x 3.02)

Carpet flooring, gas central heating radiator, double glazed window

## Bathroom

White three piece suite comprising a bath with shower attachment, wash hand basin, w.c, shaver point, mirror, tiled walls and floor, heated towel rail

## Bedroom Two

9'7" x 7'8" (2.94 x 2.36)

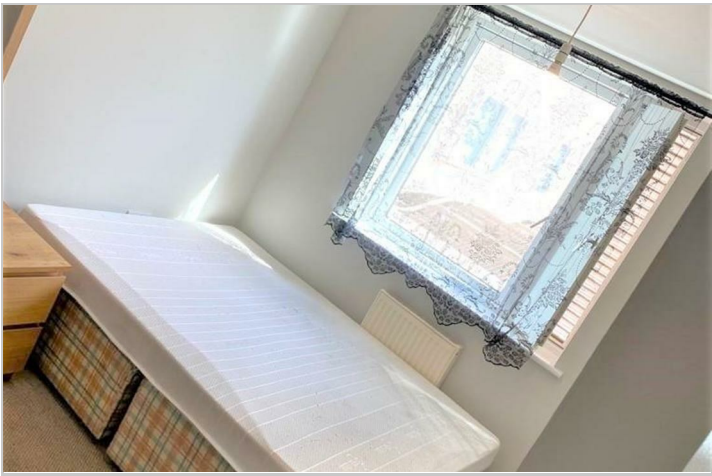
Gas central heating radiator, double glazed south facing window

## Car Parking

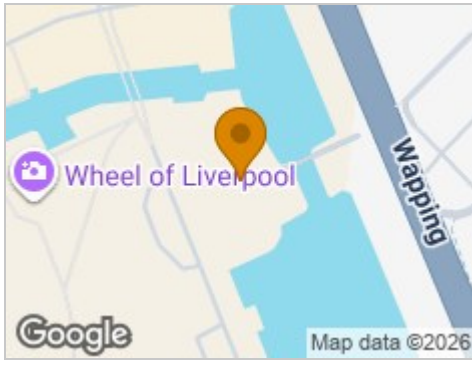
Secure allocated car parking space

**NB**

The development is having major works as such the window opening access can be restricted.



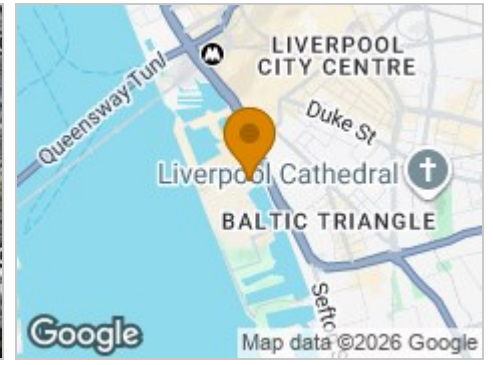
## Road Map



## Hybrid Map



## Terrain Map



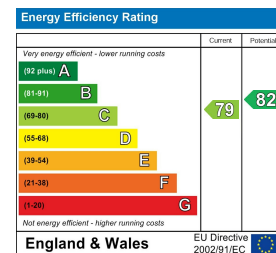
## Floor Plan



## Viewing

Please contact our Michael Moon Office on 0151 924 1000 if you wish to arrange a viewing appointment for this property or require further information.

## Energy Efficiency Graph



These particulars, whilst believed to be accurate are set out as a general outline only for guidance and do not constitute any part of an offer or contract. Intending purchasers should not rely on them as statements of representation of fact, but must satisfy themselves by inspection or otherwise as to their accuracy. No person in this firm's employment has the authority to make or give any representation or warranty in respect of the property.